



ROLLER STOCK PUSHER

FOR POSITIVE STOCK ALIGNMENT IN DIES AND FIXTURES

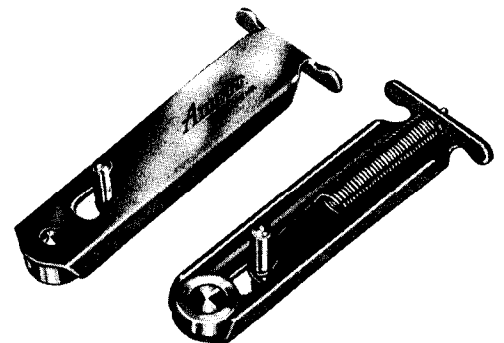
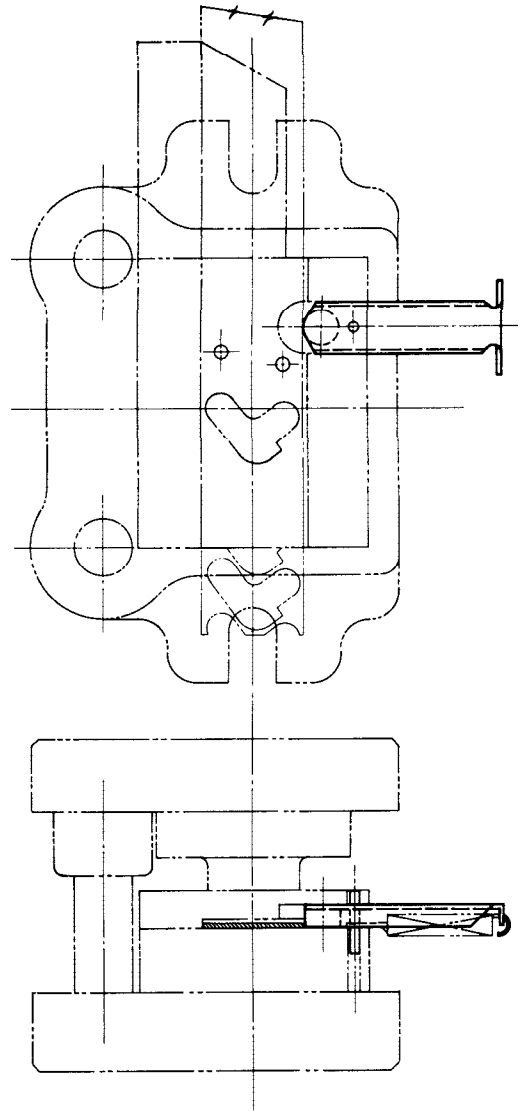
Amcor Pushers are precision made production models of high grade materials. Engineered for adaptability to all work needing accurate stock alignment such as in blanking, compound, and progressive dies. Eliminates the old hand made bench models—increases production and quality of work.

with these

5 IMPORTANT

advantages

- 1 LOW COST**—costs only a fraction of hand made pushers
- 2 SIMPLICITY OF INSTALLATION** — requires milling of one slot and drilling of one hole
- 3 COMPACT**—engineered and manufactured for minimum space requirements
- 4 ANTI-FRICTION**—hardened roller on brass shaft requires minimum effort to insert and feed stock
- 5 MINIMUM DIE MAINTENANCE** — no refitting necessary when die is sharpened . . . increases pilot life



Manufactured by

APPLIED MECHANICS CORP.

14200 IRONWOOD DRIVE, N.W. • GRAND RAPIDS, MI 49544
616-677-1355 • FAX 616-677-5969

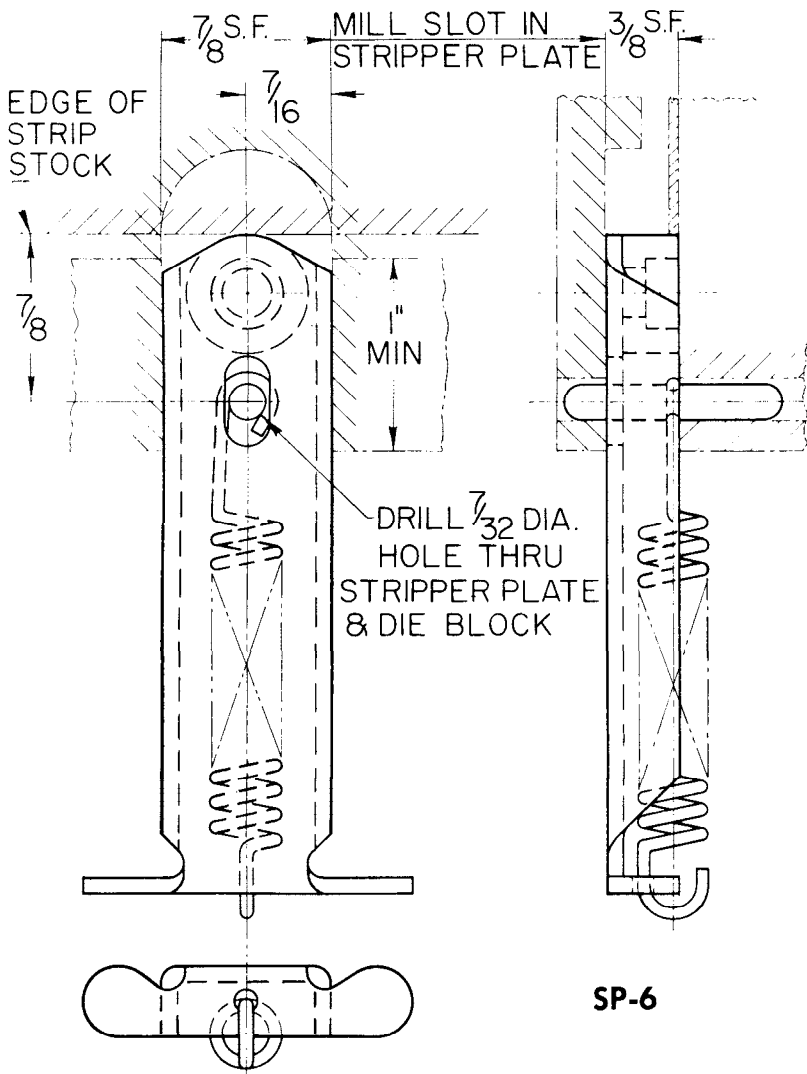
SEE REVERSE SIDE FOR TRACING TEMPLATES AND INSTALLATION INSTRUCTIONS



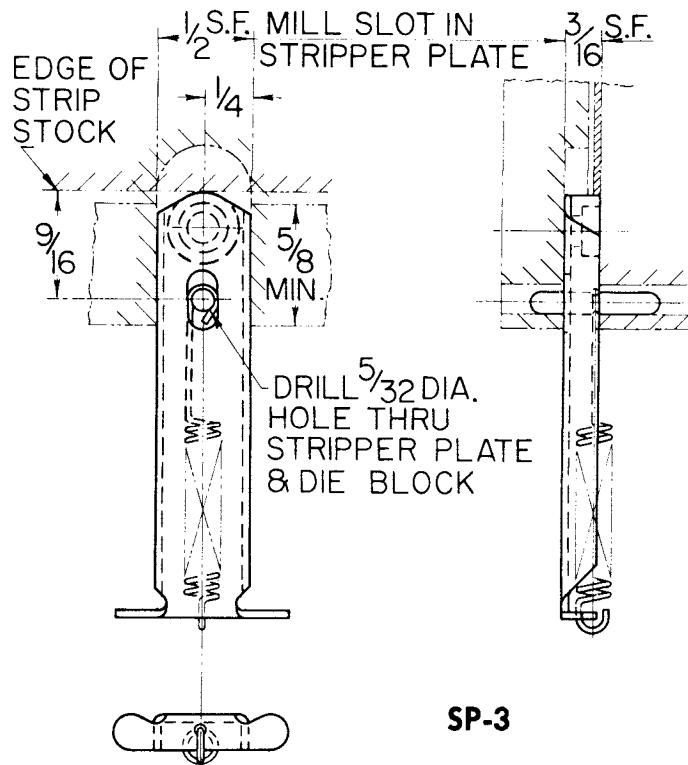
ROLLER STOCK PUSHER

FULL SCALE TRACING TEMPLATES AND
INSTALLATION INSTRUCTIONS

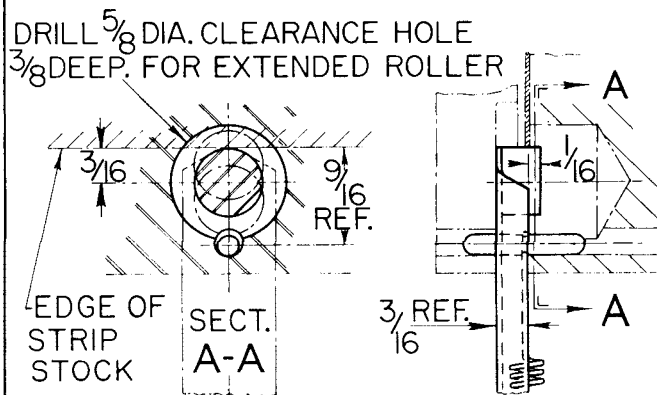
- TO INSTALL—
1—MILL SLOT AS SHOWN.
2—DRILL HOLE FOR RETAINER PIN.



SP-6



SP-3



SP-3X

Same as SP-3 except with Extended Roller for
Running Light Gage Stock.

ORDER BY STOCK NUMBER

STOCK NO.	APPROX. LBS. PRESSURE
SP-6-25	2.5
SP-6-50	5.0
SP-6-110	11.0
SP-6-180	18.0
SP-3-5	.5
SP-3-15	1.5
SP-3-45	4.5
SP-3-90	9.0
SP-3X-5	.5
SP-3X-15	1.5
SP-3X-45	4.5

SEE SEPARATE PRICE SCHEDULE

APPLIED MECHANICS CORP.

D I S T R I B U T E D B Y