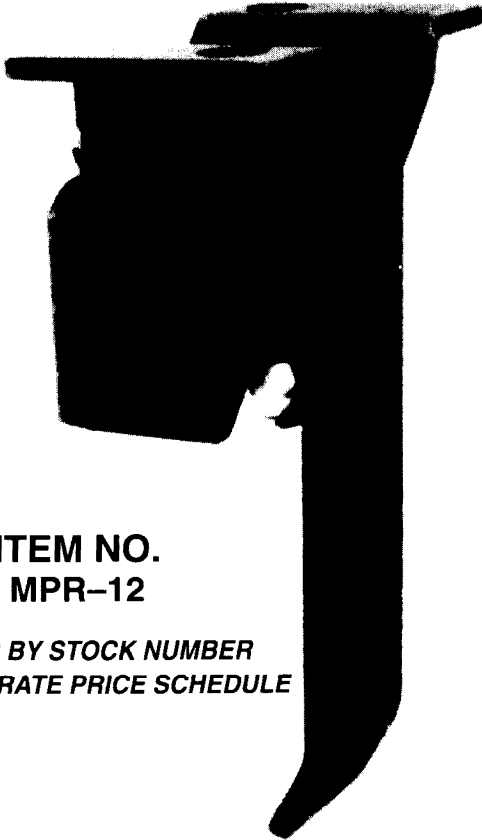




*MATERIAL POSITIONER/RELEASE #12



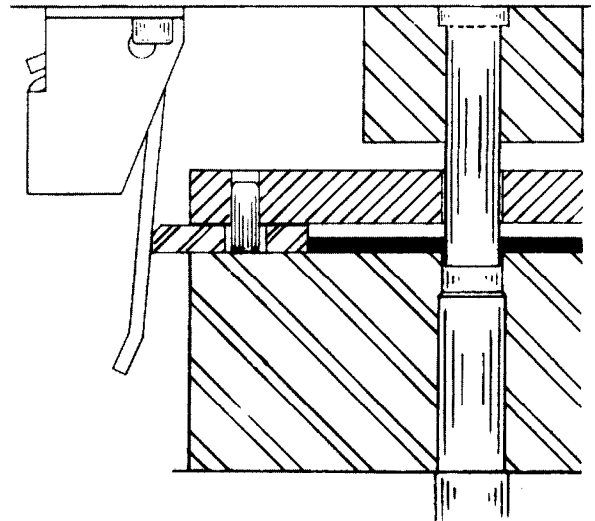
**ITEM NO.
MPR-12**

**ORDER BY STOCK NUMBER
SEE SEPARATE PRICE SCHEDULE**

- **ADJUST ARM TO PRESSURE DESIRED, 2 TO 20 lbs.**
- **.06 CENTER PUNCH FOR OPTIONAL DOWELLING 2 PLACES ON BASE**
- **1/4-20 x 1/2 SOC. HD. SCREW FURNISHED (2) DOWELS AND SLIDE NOT FURNISHED**

DISTRIBUTED BY

- **AUTOMATICALLY PUSHES MATERIAL TO POSITIVE LOCATION AS DIE CLOSURES VIA SLIDE (Not Furnished)**
- **AS THE DIE IS OPENED THE MATERIAL IS RELEASED FOR EASY FEEDING OF STOCK STRIP**



**TRACING TEMPLATES ON REVERSE SIDE
*PATENT PENDING**

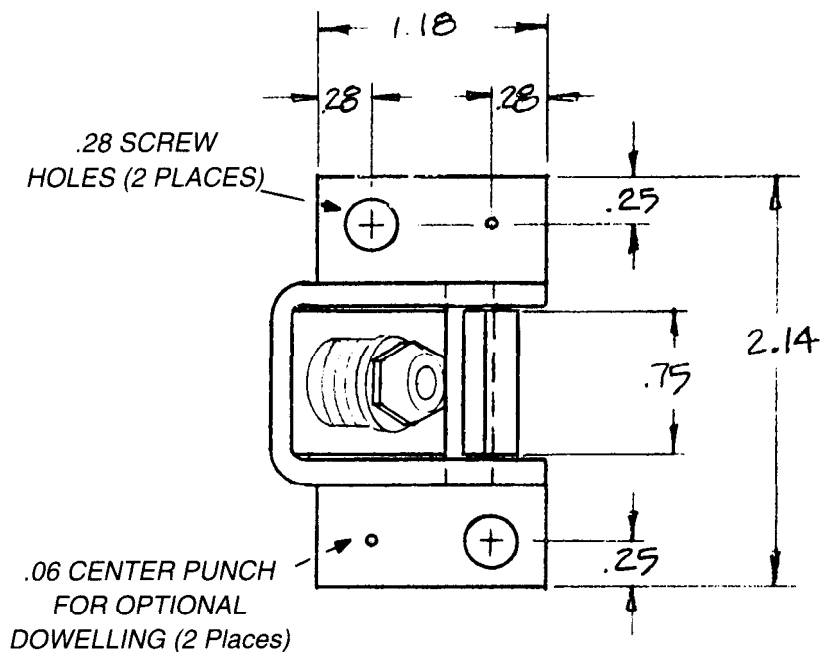
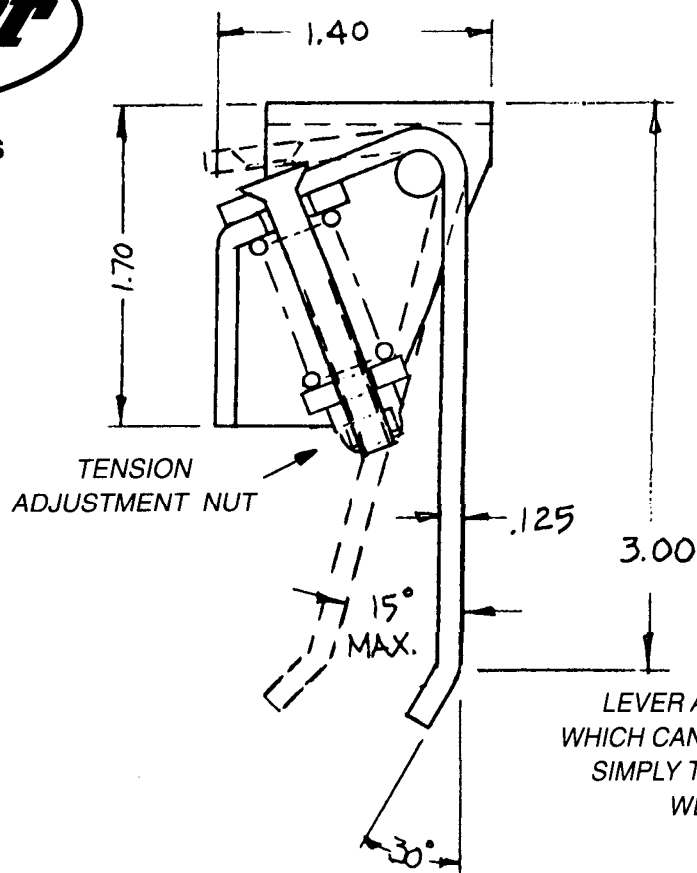
MADE IN U.S.A.

**Manufactured by
APPLIED MECHANICS CORP.**

14200 Ironwood Drive, N.W., Grand Rapids, Michigan 49544-1094
Telephone: 800-572-0140 Fax: 616-677-5969



TRACING TEMPLATES



MADE IN U.S.A.

Manufactured by
APPLIED MECHANICS CORP.

14200 Ironwood Drive, N.W., Grand Rapids, Michigan 49544-1094
Telephone: 800-572-0140 Fax: 616-677-5969