



**STOP**

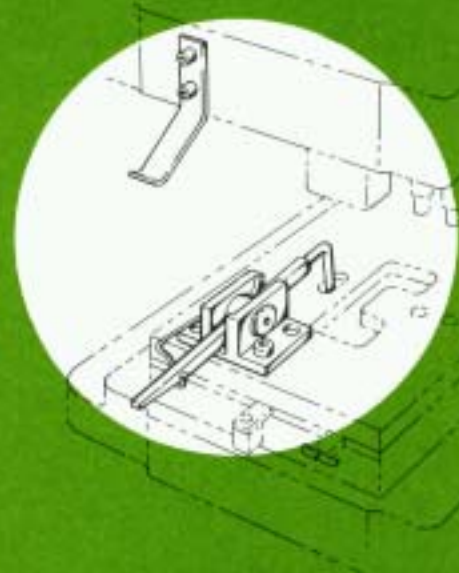
**FOR POSITIVE GAGING OF STRIP OR COIL STOCK**



U. S. Pat. No. 3,358,539

- ▶ **EASY-TO-FOLLOW INSTALLATION INSTRUCTIONS FURNISHED WITH EACH AUTOMATIC STOP.**
- ▶ **INDIVIDUALLY PACKAGED, INCLUDING LOCK PIN AND SOCKET HEAD MOUNTING SCREWS. TRIP SPRING AND SCREWS FURNISHED.**
- ▶ **STOCKED NATIONWIDE FOR IMMEDIATE DELIVERY.**
- ▶ **RIGHT TO LEFT STOCK ORDER – AS**  
**LEFT TO RIGHT STOCK ORDER – AS-4L**

DISTRIBUTED BY



SEE SEPARATE PRICE SCHEDULE

Manufactured by

**APPLIED MECHANICS CORP.**

14200 IRONWOOD DRIVE, GRAND RAPIDS, MICHIGAN 49504  
818-877-1355 FAX 818-877-5889

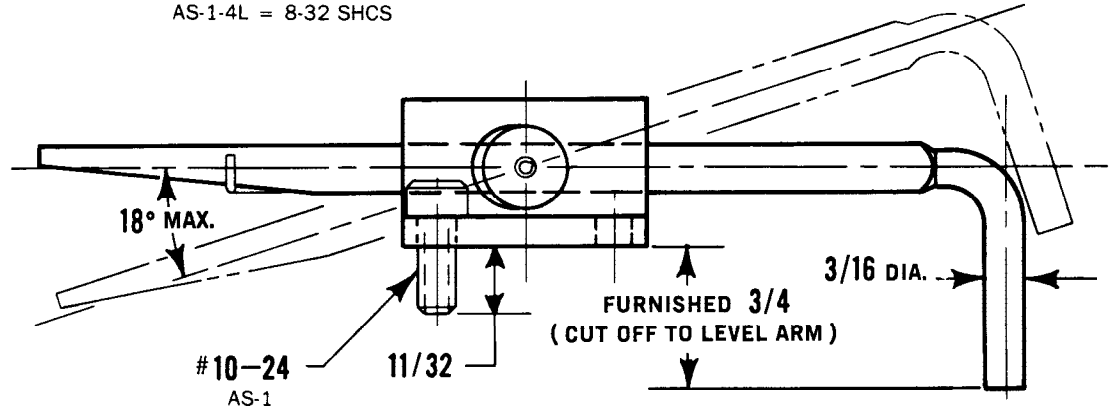
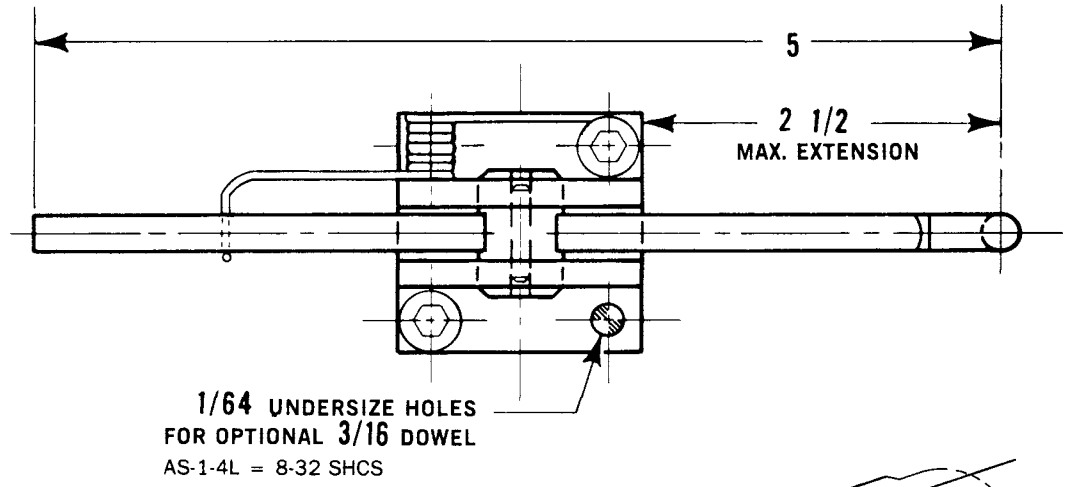
SEE FOLLOWING PAGES FOR FULL SCALE TRACING TEMPLATES

Made in U.S.A.

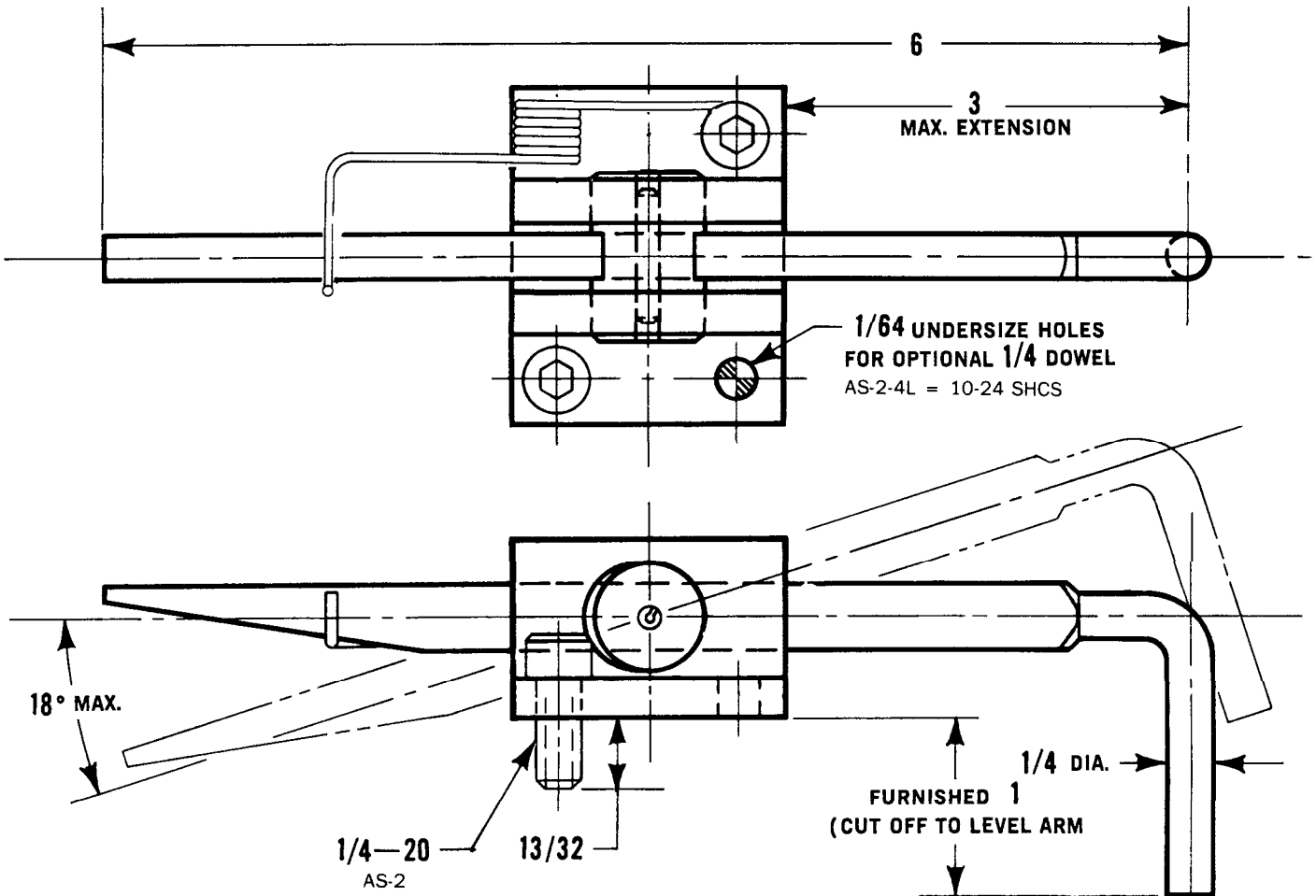
Printed in U.S.A.

# AMCOR AUTOMATIC STOP NO. AS-1, AS-1-4L

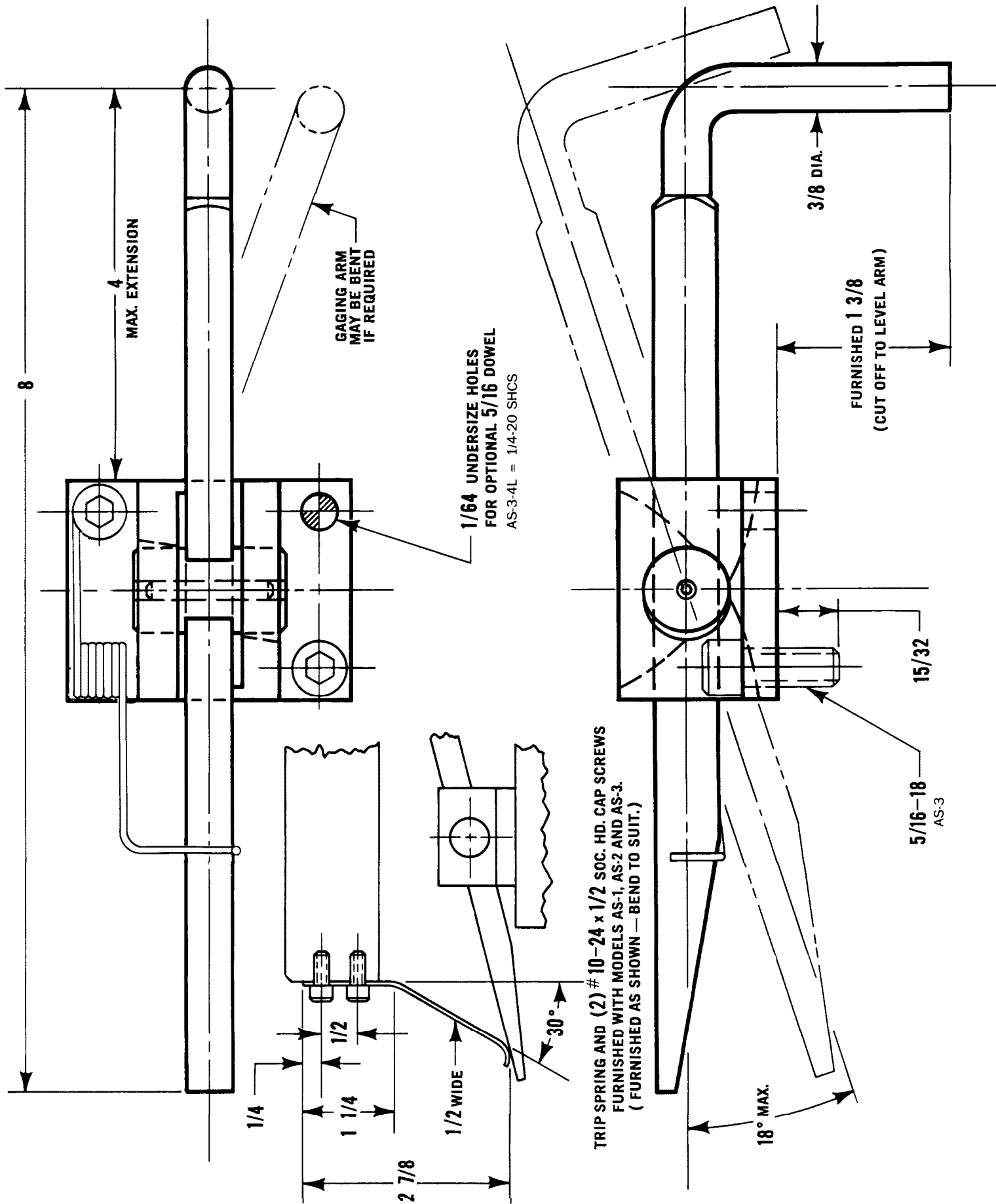
- ◆ MOUNT BASE AT MOST CONVENIENT LOCATION.
- ◆ LOCK GAGING ARM AT EXACT FRONT TO BACK POSITION, BY DRILLING HOLE THRU ARM, (USING HARDENED PIVOT PIN AS DRILL BUSHING), AND INSERT PRESS FIT ROLL PIN.
- ◆ FOR DIE CLEARANCE CONDITIONS, GAGING ARM MAY BE BENT IF REQUIRED. (SEE TEMPLATE FOR AS-3)
- ◆ USE DOWELS WHEN AN ACCURATE GAGING LOCATION IS REQUIRED.
- ◆ CASE HARDEN FINGER END OF GAGING ARM AS REQUIRED.
- ◆ ATTACH TRIP SPRING TO PUNCH OR PUNCH-HOLDER AND BEND TO ADJUST. (APPLIES TO MODELS AS-1, AS-2 AND AS-3)
- ◆ FOR TRIPPING OF MODEL AS-4, SEE TEMPLATE.



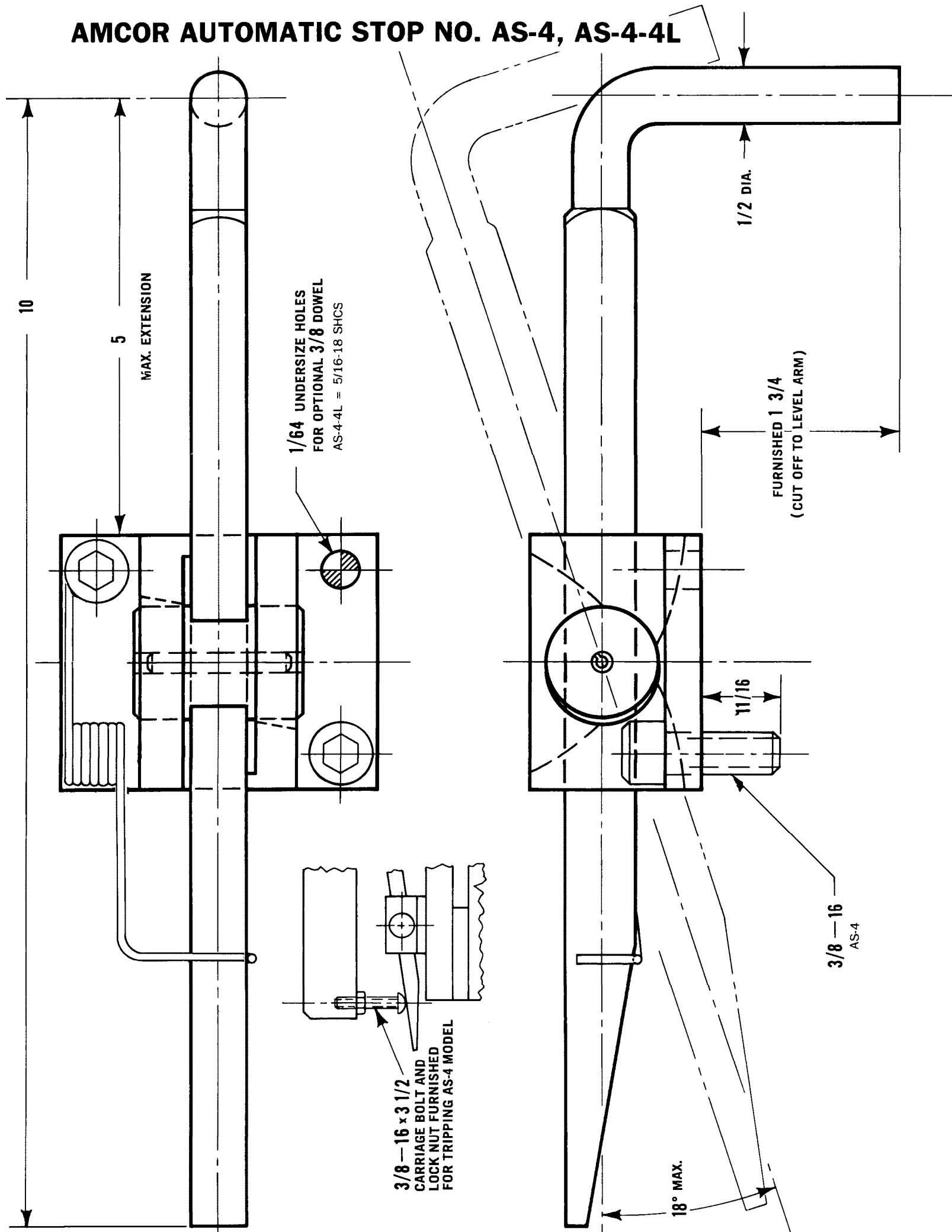
# AMCOR AUTOMATIC STOP NO. AS-2, AS-2-4L



# AMCOR AUTOMATIC STOP NO. AS-3, AS-3-4L



# AMCOR AUTOMATIC STOP NO. AS-4, AS-4-4L



10

5

MAX. EXTENSION

1/64 UNDERSIZE HOLES  
FOR OPTIONAL 3/8 DOWEL  
AS-4-4L = 5/16-18 SHCS

1/2 DIA.

FURNISHED 1 3/4  
(CUT OFF TO LEVEL ARM)

11/16

3/8-16  
AS-4

3/8-16 x 3 1/2  
CARRIAGE BOLT AND  
LOCK NUT FURNISHED  
FOR TRIPPING AS-4 MODEL

18° MAX.